

# PT 2,5-PE/L/L/MT - Knife-disconnect terminal block



1336388

<https://www.phoenixcontact.com/us/products/1336388>

Please be informed that the data shown in this PDF document is generated from our online catalog. Please find the complete data in the user documentation. Our general terms of use for downloads are valid.



Knife-disconnect terminal block, Protective conductor connection, connection method: Push-in connection, Rated cross section: 2.5 mm<sup>2</sup>, cross section: 0.14 mm<sup>2</sup> - 4 mm<sup>2</sup>, Feed-through level, connection method: Push-in connection, Rated cross section: 2.5 mm<sup>2</sup>, cross section: 0.14 mm<sup>2</sup> - 4 mm<sup>2</sup>, mounting: NS 35/7,5, NS 35/15, color: gray

## Commercial data

|                                      |               |
|--------------------------------------|---------------|
| Item number                          | 1336388       |
| Packing unit                         | 1 pc          |
| Minimum order quantity               | 50 pc         |
| Sales key                            | BE22          |
| Product key                          | BE2231        |
| GTIN                                 | 4063151637507 |
| Weight per piece (including packing) | 32.465 g      |
| Weight per piece (excluding packing) | 22.22 g       |
| Customs tariff number                | 85369010      |
| Country of origin                    | PL            |

# PT 2,5-PE/L/L/MT - Knife-disconnect terminal block



1336388

<https://www.phoenixcontact.com/us/products/1336388>

## Technical data

### Product properties

|                       |                       |
|-----------------------|-----------------------|
| Product type          | Ground terminal block |
| Number of positions   | 4                     |
| Number of connections | 8                     |

### Insulation characteristics

|                      |     |
|----------------------|-----|
| Overvoltage category | III |
| Degree of pollution  | 3   |

### Electrical properties

|                     |      |
|---------------------|------|
| Rated surge voltage | 6 kV |
|---------------------|------|

### Connection data

|                                 |                     |
|---------------------------------|---------------------|
| Number of connections per level | 2                   |
| Nominal cross section           | 2.5 mm <sup>2</sup> |

### Protective conductor connection

|   |  |
|---|--|
| Stripping length  | 8 mm ... 10 mm                               |
| Internal cylindrical gage   | A3   |
|   | B3   |
| Connection in acc. with standard                                  | IEC 60947-7-2                                |
| Conductor cross section rigid                                     | 0.14 mm <sup>2</sup> ... 4 mm <sup>2</sup>   |
| Cross section AWG   | 26 ... 12 (converted acc. to IEC)            |
| Conductor cross section flexible                                  | 0.14 mm <sup>2</sup> ... 4 mm <sup>2</sup>   |
| Conductor cross section, flexible [AWG]                           | 26 ... 12 (converted acc. to IEC)            |
| Conductor cross-section flexible (ferrule without plastic sleeve) | 0.14 mm <sup>2</sup> ... 2.5 mm <sup>2</sup> |
| Flexible conductor cross section (ferrule with plastic sleeve)    | 0.14 mm <sup>2</sup> ... 2.5 mm <sup>2</sup> |
| Nominal cross section   | 2.5 mm <sup>2</sup>                          |

### Feed-through level

|   |   |
|---|---|
| Stripping length  | 8 mm ... 10 mm  |
| Connection in acc. with standard                                  | IEC 60947-7-1   |
| Conductor cross section rigid                                     | 0.14 mm <sup>2</sup> ... 4 mm <sup>2</sup>            |
| Cross section AWG   | 26 ... 12 (converted acc. to IEC)                     |
| Conductor cross section flexible                                  | 0.14 mm <sup>2</sup> ... 4 mm <sup>2</sup>            |
| Conductor cross section, flexible [AWG]                           | 26 ... 12 (converted acc. to IEC)                     |
| Conductor cross-section flexible (ferrule without plastic sleeve) | 0.14 mm <sup>2</sup> ... 2.5 mm <sup>2</sup>          |
| Flexible conductor cross section (ferrule with plastic sleeve)    | 0.14 mm <sup>2</sup> ... 2.5 mm <sup>2</sup>          |
| Nominal current   | 18 A  |
| Maximum load current  | 20 A (with 4 mm <sup>2</sup> conductor cross-section) |
| Nominal voltage   | 500 V   |
| Nominal cross section   | 2.5 mm <sup>2</sup>                                   |

# PT 2,5-PE/L/L/MT - Knife-disconnect terminal block



1336388

<https://www.phoenixcontact.com/us/products/1336388>

## Disconnect zone

|   |   |
|---|---|
| Stripping length  | 8 mm ... 10 mm  |
| Connection in acc. with standard                                  | IEC 60947-7-1   |
| Conductor cross section rigid                                     | 0.14 mm <sup>2</sup> ... 4 mm <sup>2</sup>            |
| Cross section AWG   | 26 ... 12 (converted acc. to IEC)                     |
| Conductor cross section flexible                                  | 0.14 mm <sup>2</sup> ... 4 mm <sup>2</sup>            |
| Conductor cross section, flexible [AWG]                           | 26 ... 12 (converted acc. to IEC)                     |
| Conductor cross-section flexible (ferrule without plastic sleeve) | 0.14 mm <sup>2</sup> ... 2.5 mm <sup>2</sup>          |
| Flexible conductor cross section (ferrule with plastic sleeve)    | 0.14 mm <sup>2</sup> ... 2.5 mm <sup>2</sup>          |
| Nominal current   | 18 A  |
| Maximum load current  | 20 A (with 4 mm <sup>2</sup> conductor cross-section) |
| Nominal voltage   | 500 V   |
| Nominal cross section   | 2.5 mm <sup>2</sup>                                   |

## Protective conductor connection Connection cross sections directly pluggable

|   |   |
|---|---|
| Conductor cross section rigid                                     | 0.34 mm <sup>2</sup> ... 4 mm <sup>2</sup>  |
| Conductor cross section, rigid [AWG]                              | 20 ... 12 (converted acc. to IEC)           |
| Conductor cross section flexible                                  | 0.5 mm <sup>2</sup> ... 2.5 mm <sup>2</sup> |
| Conductor cross-section flexible (ferrule without plastic sleeve) | 0.5 mm <sup>2</sup> ... 2.5 mm <sup>2</sup> |
| Flexible conductor cross section (ferrule with plastic sleeve)    | 0.5 mm <sup>2</sup> ... 2.5 mm <sup>2</sup> |

## Feed-through level Connection cross sections directly pluggable

|   |   |
|---|---|
| Conductor cross section rigid                                     | 0.34 mm <sup>2</sup> ... 4 mm <sup>2</sup>  |
| Conductor cross section, rigid [AWG]                              | 20 ... 12 (converted acc. to IEC)           |
| Conductor cross section flexible                                  | 0.5 mm <sup>2</sup> ... 2.5 mm <sup>2</sup> |
| Conductor cross-section flexible (ferrule without plastic sleeve) | 0.5 mm <sup>2</sup> ... 2.5 mm <sup>2</sup> |
| Flexible conductor cross section (ferrule with plastic sleeve)    | 0.5 mm <sup>2</sup> ... 2.5 mm <sup>2</sup> |

## Disconnect zone Connection cross sections directly pluggable

|   |   |
|---|---|
| Conductor cross section rigid                                     | 0.34 mm <sup>2</sup> ... 4 mm <sup>2</sup>  |
| Conductor cross section, rigid [AWG]                              | 20 ... 12 (converted acc. to IEC)           |
| Conductor cross section flexible                                  | 0.5 mm <sup>2</sup> ... 2.5 mm <sup>2</sup> |
| Conductor cross-section flexible (ferrule without plastic sleeve) | 0.5 mm <sup>2</sup> ... 2.5 mm <sup>2</sup> |
| Flexible conductor cross section (ferrule with plastic sleeve)    | 0.5 mm <sup>2</sup> ... 2.5 mm <sup>2</sup> |

## Dimensions

|                    |          |
|--------------------|----------|
| Width              | 5.2 mm   |
| End cover width    | 2.2 mm   |
| Height             | 142.4 mm |
| Depth on NS 35/7,5 | 70.2 mm  |
| Depth on NS 35/15  | 77.7 mm  |

## Material specifications

|  |      |
|--|------|
| Color                                  | gray |
| Flammability rating according to UL 94 | V0   |

# PT 2,5-PE/L/L/MT - Knife-disconnect terminal block



1336388

<https://www.phoenixcontact.com/us/products/1336388>

|  |             |
|--|-------------|
| Insulating material group  | I           |
| Insulating material  | PA          |
| Static insulating material application in cold                   | -60 °C      |
| Relative insulation material temperature index (Elec., UL 746 B) | 130 °C      |
| Fire protection for rail vehicles (DIN EN 45545-2) R22           | HL 1 - HL 3 |
| Fire protection for rail vehicles (DIN EN 45545-2) R23           | HL 1 - HL 3 |
| Fire protection for rail vehicles (DIN EN 45545-2) R24           | HL 1 - HL 3 |
| Fire protection for rail vehicles (DIN EN 45545-2) R26           | HL 1 - HL 3 |
| Surface flammability NFPA 130 (ASTM E 162)                       | passed      |
| Specific optical density of smoke NFPA 130 (ASTM E 662)          | passed      |
| Smoke gas toxicity NFPA 130 (SMP 800C)                           | passed      |

## Electrical tests

### Surge voltage test

|        |             |
|--------|-------------|
| Result | Test passed |
|--------|-------------|

### Temperature-rise test

|  |                                |
|--|--------------------------------|
| Requirement temperature-rise test                | Increase in temperature ≤ 45 K |
| Result   | Test passed                    |
| Short-time withstand current 2.5 mm <sup>2</sup> | 0.3 kA                         |
| Result   | Test passed                    |

### Power-frequency withstand voltage

|                       |             |
|-----------------------|-------------|
| Test voltage setpoint | 1.89 kV     |
| Result                | Test passed |

## Mechanical properties

### Mechanical data

|                 |     |
|-----------------|-----|
| Open side panel | Yes |
|-----------------|-----|

## Mechanical tests

### Mechanical strength

|        |             |
|--------|-------------|
| Result | Test passed |
|--------|-------------|

### Attachment on the carrier

|                         |             |
|-------------------------|-------------|
| DIN rail/fixing support | NS 35       |
| Result                  | Test passed |

### Test for conductor damage and slackening

|                                |                               |
|--------------------------------|-------------------------------|
| Rotation speed                 | 10 (+/- 2) rpm                |
| Revolutions                    | 135                           |
| Conductor cross section/weight | 0.14 mm <sup>2</sup> / 0.2 kg |
|                                | 2.5 mm <sup>2</sup> / 0.7 kg  |
|                                | 4 mm <sup>2</sup> / 0.9 kg    |
| Result                         | Test passed                   |

1336388

<https://www.phoenixcontact.com/us/products/1336388>

## Environmental and real-life conditions

### Aging

|                    |             |
|--------------------|-------------|
| Temperature cycles | 192         |
|                    | 192         |
| Result             | Test passed |
|                    | Test passed |

### Needle-flame test

|                  |             |
|------------------|-------------|
| Time of exposure | 30 s        |
| Result           | Test passed |

### Oscillation/broadband noise

|                        |   |
|------------------------|---|
| Specification          | DIN EN 50155 (VDE 0115-200):2022-06                 |
| Spectrum               | Service life test category 1, class B, body mounted |
| Frequency              | $f_1 = 5 \text{ Hz}$ to $f_2 = 150 \text{ Hz}$      |
| ASD level              | $0.964 \text{ (m/s}^2\text{)}^2\text{/Hz}$          |
| Acceleration           | 3.12g   |
| Test duration per axis | 5 h   |
| Test directions        | X-, Y- and Z-axis                                   |
| Result                 | Test passed   |

### Shocks

|                                |                                     |
|--------------------------------|-------------------------------------|
| Specification                  | DIN EN 50155 (VDE 0115-200):2022-06 |
| Pulse shape                    | Half-sine                           |
| Acceleration                   | 5g                                  |
| Shock duration                 | 30 ms                               |
| Number of shocks per direction | 3                                   |
| Test directions                | X-, Y- and Z-axis (pos. and neg.)   |
| Result                         | Test passed                         |

### Ambient conditions

|  |   |
|--|---|
| Ambient temperature (operation)          | -60 °C ... 105 °C (max. short-term operating temperature RTI Elec.)       |
| Ambient temperature (storage/transport)  | -25 °C ... 60 °C (for a short time, not exceeding 24 h, -60 °C to +70 °C) |
| Ambient temperature (assembly)           | -5 °C ... 70 °C   |
| Ambient temperature (actuation)          | -5 °C ... 70 °C   |
| Permissible humidity (storage/transport) | 30 % ... 70 %   |

## Standards and regulations

|                                  |               |
|----------------------------------|---------------|
| Connection in acc. with standard | IEC 60947-7-2 |
|                                  | IEC 60947-7-1 |
|                                  | IEC 60947-7-1 |

## Mounting

# PT 2,5-PE/L/L/MT - Knife-disconnect terminal block



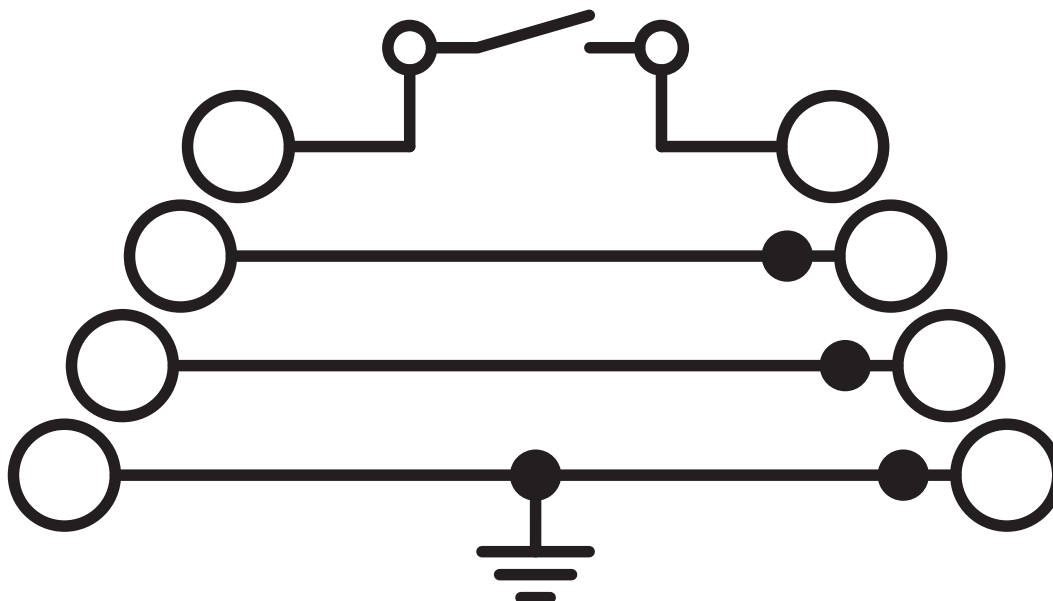
1336388

<https://www.phoenixcontact.com/us/products/1336388>

|               |           |
|---------------|-----------|
| Mounting type | NS 35/7,5 |
|               | NS 35/15  |

Drawings

Circuit diagram



# PT 2,5-PE/L/L/MT - Knife-disconnect terminal block



1336388

<https://www.phoenixcontact.com/us/products/1336388>

## Approvals

To download certificates, visit the product detail page: <https://www.phoenixcontact.com/us/products/1336388>



**CSA**

Approval ID: 13631



**cULus Recognized**

Approval ID: E60425

|               | Nominal voltage $U_N$ | Nominal current $I_N$ | Cross section AWG | Cross section $\text{mm}^2$ |
|---------------|-----------------------|-----------------------|-------------------|-----------------------------|
| Use group B   |                       |                       |                   |                             |
|               | 300 V                 | 18 A                  | 26 - 12           | -                           |
| PE connection | -                     | -                     | 26 - 12           | -                           |
| Use group C   |                       |                       |                   |                             |
|               | 300 V                 | 18 A                  | 26 - 12           | -                           |
| PE connection | -                     | -                     | 26 - 12           | -                           |
| Use group F   |                       |                       |                   |                             |
|               | 500 V                 | 18 A                  | 26 - 12           | -                           |
| Use group D   |                       |                       |                   |                             |
|               | 600 V                 | 5 A                   | 26 - 12           | -                           |
| PE connection | -                     | -                     | 26 - 12           | -                           |



# PT 2,5-PE/L/L/MT - Knife-disconnect terminal block



1336388

<https://www.phoenixcontact.com/us/products/1336388>

## Classifications

### ECLASS

|             |          |
|-------------|----------|
| ECLASS-11.0 | 27141141 |
| ECLASS-13.0 | 27250108 |

### ETIM

|          |          |
|----------|----------|
| ETIM 8.0 | EC000901 |
|----------|----------|

# PT 2,5-PE/L/L/MT - Knife-disconnect terminal block



1336388

<https://www.phoenixcontact.com/us/products/1336388>

## Accessories

**i** Note: Applying some accessories below might limit this product.

### FBS 2-5 - Plug-in bridge

3030161

<https://www.phoenixcontact.com/us/products/3030161>



Plug-in bridge, pitch: 5.2 mm, number of positions: 2, length: 23 mm, color: red

**i** Max. current carrying capacity: 20 A

---

### FBS 3-5 - Plug-in bridge

3030174

<https://www.phoenixcontact.com/us/products/3030174>



Plug-in bridge, pitch: 5.2 mm, number of positions: 3, length: 23 mm, color: red

**i** Max. current carrying capacity: 20 A

# PT 2,5-PE/L/L/MT - Knife-disconnect terminal block



1336388

<https://www.phoenixcontact.com/us/products/1336388>


## FBS 4-5 - Plug-in bridge

3030187

<https://www.phoenixcontact.com/us/products/3030187>



Plug-in bridge, pitch: 5.2 mm, number of positions: 4, length: 23 mm, color: red

 Max. current carrying capacity: 20 A

---

## FBS 5-5 - Plug-in bridge

3030190

<https://www.phoenixcontact.com/us/products/3030190>



Plug-in bridge, pitch: 5.2 mm, number of positions: 5, length: 23 mm, color: red

 Max. current carrying capacity: 20 A

# PT 2,5-PE/L/L/MT - Knife-disconnect terminal block



1336388

<https://www.phoenixcontact.com/us/products/1336388>


## FBS 10-5 - Plug-in bridge

3030213

<https://www.phoenixcontact.com/us/products/3030213>



Plug-in bridge, pitch: 5.2 mm, number of positions: 10, length: 23 mm, color: red

 Max. current carrying capacity: 20 A

---

## FBS 20-5 - Plug-in bridge

3030226

<https://www.phoenixcontact.com/us/products/3030226>



Plug-in bridge, pitch: 5.2 mm, number of positions: 20, color: red

 Max. current carrying capacity: 20 A

# PT 2,5-PE/L/L/MT - Knife-disconnect terminal block



1336388

<https://www.phoenixcontact.com/us/products/1336388>

## FBS 50-5 - Plug-in bridge

3038930

<https://www.phoenixcontact.com/us/products/3038930>



Plug-in bridge, pitch: 5.2 mm, number of positions: 50, color: red

 Max. current carrying capacity: 20 A

---

## FBSR 2-5 - Plug-in bridge

3033702

<https://www.phoenixcontact.com/us/products/3033702>



Plug-in bridge, pitch: 5.2 mm, number of positions: 2, color: red

 Max. current carrying capacity: 16 A

# PT 2,5-PE/L/L/MT - Knife-disconnect terminal block



1336388

<https://www.phoenixcontact.com/us/products/1336388>

## FBSR 3-5 - Plug-in bridge

3001591

<https://www.phoenixcontact.com/us/products/3001591>



Plug-in bridge, pitch: 5.2 mm, number of positions: 3, color: red

 Max. current carrying capacity: 16 A

---

## FBSR 4-5 - Plug-in bridge

3001592

<https://www.phoenixcontact.com/us/products/3001592>



Plug-in bridge, pitch: 5.2 mm, number of positions: 4, color: red

 Max. current carrying capacity: 16 A

---

# PT 2,5-PE/L/L/MT - Knife-disconnect terminal block



1336388

<https://www.phoenixcontact.com/us/products/1336388>

## FBSR 5-5 - Plug-in bridge

3001593

<https://www.phoenixcontact.com/us/products/3001593>

Plug-in bridge, pitch: 5.2 mm, number of positions: 5, color: red



 Max. current carrying capacity: 16 A

---


## FBSR 10-5 - Plug-in bridge

3033710

<https://www.phoenixcontact.com/us/products/3033710>

Plug-in bridge, pitch: 5.2 mm, number of positions: 10, color: red



 Max. current carrying capacity: 16 A

# PT 2,5-PE/L/L/MT - Knife-disconnect terminal block



1336388

<https://www.phoenixcontact.com/us/products/1336388>

## FBS-PV - Potential bridge

3032185

<https://www.phoenixcontact.com/us/products/3032185>



Vertical potential bridge, to connect the upper and lower level

---


## FBS 2-5 BU - Plug-in bridge

3036877

<https://www.phoenixcontact.com/us/products/3036877>



Plug-in bridge, pitch: 5.2 mm, number of positions: 2, color: blue

 Max. current carrying capacity: 20 A



# PT 2,5-PE/L/L/MT - Knife-disconnect terminal block



1336388

<https://www.phoenixcontact.com/us/products/1336388>

## FBS 3-5 BU - Plug-in bridge

3036880

<https://www.phoenixcontact.com/us/products/3036880>



Plug-in bridge, pitch: 5.2 mm, number of positions: 3, color: blue

 Max. current carrying capacity: 20 A

---

## FBS 4-5 BU - Plug-in bridge

3036893

<https://www.phoenixcontact.com/us/products/3036893>



Plug-in bridge, pitch: 5.2 mm, number of positions: 4, color: blue

 Max. current carrying capacity: 20 A

---

# PT 2,5-PE/L/L/MT - Knife-disconnect terminal block

1336388

<https://www.phoenixcontact.com/us/products/1336388>


## FBS 5-5 BU - Plug-in bridge

3036903

<https://www.phoenixcontact.com/us/products/3036903>



Plug-in bridge, pitch: 5.2 mm, number of positions: 5, color: blue

 Max. current carrying capacity: 20 A

---


## FBS 10-5 BU - Plug-in bridge

3036916

<https://www.phoenixcontact.com/us/products/3036916>



Plug-in bridge, pitch: 5.2 mm, number of positions: 10, color: blue

 Max. current carrying capacity: 20 A

# PT 2,5-PE/L/L/MT - Knife-disconnect terminal block

1336388

<https://www.phoenixcontact.com/us/products/1336388>


## FBS 20-5 BU - Plug-in bridge

3036929

<https://www.phoenixcontact.com/us/products/3036929>



Plug-in bridge, pitch: 5.2 mm, number of positions: 20, color: blue

 Max. current carrying capacity: 20 A

---


## FBS 50-5 BU - Plug-in bridge

3032114

<https://www.phoenixcontact.com/us/products/3032114>



Plug-in bridge, pitch: 5.2 mm, number of positions: 50, color: blue

 Max. current carrying capacity: 20 A

# PT 2,5-PE/L/L/MT - Knife-disconnect terminal block

1336388

<https://www.phoenixcontact.com/us/products/1336388>

## RB ST (2,5/4)-1,5/S - Reducing bridge

3214356

<https://www.phoenixcontact.com/us/products/3214356>



Reducing bridge, pitch: 6.7 mm, number of positions: 2, length: 23 mm, color: red

 Max. current carrying capacity: 24 A

---

## RB ST 6-(2,5/4) - Reducing bridge

3030860

<https://www.phoenixcontact.com/us/products/3030860>



Reducing bridge, pitch: 9 mm, number of positions: 2, length: 30 mm, color: red

 Max. current carrying capacity: 35 A

# PT 2,5-PE/L/L/MT - Knife-disconnect terminal block

1336388

<https://www.phoenixcontact.com/us/products/1336388>


## RB ST 10-(2,5/4) - Reducing bridge

3030873

<https://www.phoenixcontact.com/us/products/3030873>



Reducing bridge, pitch: 10 mm, number of positions: 2, length: 36 mm, color: red

 Max. current carrying capacity: 35 A

---


## RB ST 16-(2,5/4) - Reducing bridge

3030886

<https://www.phoenixcontact.com/us/products/3030886>



Reducing bridge, pitch: 11 mm, number of positions: 2, length: 37 mm, color: red

 Max. current carrying capacity: 35 A

# PT 2,5-PE/L/L/MT - Knife-disconnect terminal block

1336388

<https://www.phoenixcontact.com/us/products/1336388>


## RB ST 35-(2,5/4) - Reducing bridge

3030899

<https://www.phoenixcontact.com/us/products/3030899>



Reducing bridge, pitch: 11 mm, number of positions: 2, color: red

 Max. current carrying capacity: 35 A

---

## RB ST (2,5/4)-1,5 - Reducing bridge

3038943

<https://www.phoenixcontact.com/us/products/3038943>



Reducing bridge, pitch: 7.1 mm, number of positions: 2, length: 23 mm, color: red

 Max. current carrying capacity: 24 A

# PT 2,5-PE/L/L/MT - Knife-disconnect terminal block



1336388

<https://www.phoenixcontact.com/us/products/1336388>


## RB UT 6-ST(2,5/4) - Reducing bridge

3047264

<https://www.phoenixcontact.com/us/products/3047264>



Reducing bridge, pitch: 9.5 mm, number of positions: 2, length: 33 mm, color: red

 Max. current carrying capacity: 35 A

---


## RB UT 35-ST(2,5/4) - Reducing bridge

3047280

<https://www.phoenixcontact.com/us/products/3047280>



Reducing bridge, pitch: 10.8 mm, number of positions: 2, color: red

 Max. current carrying capacity: 40 A

---

# PT 2,5-PE/L/L/MT - Knife-disconnect terminal block



1336388

<https://www.phoenixcontact.com/us/products/1336388>


## RB UT 10-ST(2,5/4) - Reducing bridge

3047086

<https://www.phoenixcontact.com/us/products/3047086>



Reducing bridge, pitch: 10.2 mm, number of positions: 2, length: 33 mm, color: red

 Max. current carrying capacity: 40 A

---


## RB UT 16-ST(2,5/4) - Reducing bridge

3047099

<https://www.phoenixcontact.com/us/products/3047099>



Reducing bridge, pitch: 11 mm, number of positions: 2, length: 41 mm, color: red

 Max. current carrying capacity: 40 A



# PT 2,5-PE/L/L/MT - Knife-disconnect terminal block



1336388

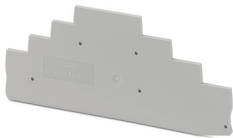
<https://www.phoenixcontact.com/us/products/1336388>

## D-PT 2,5-4L - End cover

1336340

<https://www.phoenixcontact.com/us/products/1336340>

End cover, length: 142.4 mm, width: 2.2 mm, height: 142.4 mm, color: gray



---

## SZF 1-0,6X3,5 - Screwdriver

1204517

<https://www.phoenixcontact.com/us/products/1204517>

Actuation tool, for ST terminal blocks, also suitable for use as a bladed screwdriver, size: 0.6 x 3.5 x 100 mm, 2-component grip, with non-slip grip



# PT 2,5-PE/L/L/MT - Knife-disconnect terminal block



1336388

<https://www.phoenixcontact.com/us/products/1336388>

## S-MT - Switching lock

3247954

<https://www.phoenixcontact.com/us/products/3247954>



Switching lock, length: 10.5 mm, width: 3.5 mm, height: 10.5 mm, color: white

---

## PT-IL - Mounting material

3208090

<https://www.phoenixcontact.com/us/products/3208090>



Operating decal for the push-in Technology

# PT 2,5-PE/L/L/MT - Knife-disconnect terminal block



1336388

<https://www.phoenixcontact.com/us/products/1336388>

## ST-BW - Actuation tool

1207608

<https://www.phoenixcontact.com/us/products/1207608>

Actuation tool, for all 2.5 mm<sup>2</sup> - 4.0 mm<sup>2</sup> spring-cages



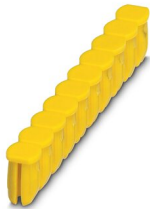
---

## CEC 2,5 - Filler plugs

3062757

<https://www.phoenixcontact.com/us/products/3062757>

Cover for conductor shaft, 10-pos., for spring cage terminal blocks (ST) and terminal blocks with push-in technology (PT) with a width of 5.2 mm



# PT 2,5-PE/L/L/MT - Knife-disconnect terminal block



1336388

<https://www.phoenixcontact.com/us/products/1336388>

## P-CO 2-5 R47K - Component connector

3032447

<https://www.phoenixcontact.com/us/products/3032447>



Component connector, with 47 kOhm resistance for wire-break monitoring, pitch: 5.2 mm, length: 8.9 mm, width: 4.1 mm, height: 8.9 mm, number of positions: 2, color: black

---

## WS PT 2,5 - Warning label

1029026

<https://www.phoenixcontact.com/us/products/1029026>



Warning label, yellow/black, labeled: Lightning flash, mounting type: plug in, for terminal block width: 5.2 mm

## PT 2,5-PE/L/L/MT - Knife-disconnect terminal block

1336388

<https://www.phoenixcontact.com/us/products/1336388>



### NS 35/ 7,5 PERF 2000MM - DIN rail perforated

0801733

<https://www.phoenixcontact.com/us/products/0801733>



DIN rail perforated, acc. to EN 60715, material: Steel, galvanized, passivated with a thick layer, Standard profile, color: silver, Pack of 25 (50 m)

---

### NS 35/ 7,5 UNPERF 2000MM - DIN rail, unperforated

0801681

<https://www.phoenixcontact.com/us/products/0801681>



DIN rail, unperforated, acc. to EN 60715, material: Steel, galvanized, passivated with a thick layer, Standard profile, color: silver, Pack of 25 (50 m)

## PT 2,5-PE/L/L/MT - Knife-disconnect terminal block

1336388

<https://www.phoenixcontact.com/us/products/1336388>



### NS 35/ 7,5 WH PERF 2000MM - DIN rail perforated

1204119

<https://www.phoenixcontact.com/us/products/1204119>



DIN rail perforated, acc. to EN 60715, material: Steel, Galvanized, white passivated, Standard profile, color: silver, Pack of 25 (50 m)

---

### NS 35/ 7,5 WH UNPERF 2000MM-VPE 10 - DIN rail, unperforated

1204122

<https://www.phoenixcontact.com/us/products/1204122>



DIN rail, unperforated, acc. to EN 60715, material: Steel, Galvanized, white passivated, Standard profile, color: silver, Pack of 10 (20 m)

## PT 2,5-PE/L/L/MT - Knife-disconnect terminal block

1336388

<https://www.phoenixcontact.com/us/products/1336388>



### NS 35/ 7,5 AL UNPERF 2000MM - DIN rail, unperforated

0801704

<https://www.phoenixcontact.com/us/products/0801704>



DIN rail, unperforated, acc. to EN 60715, material: Aluminum, uncoated, Standard profile, color: silver, Pack of 25 (50 m)

---

### NS 35/ 7,5 ZN PERF 2000MM - DIN rail perforated

1206421

<https://www.phoenixcontact.com/us/products/1206421>



DIN rail perforated, acc. to EN 60715, material: Steel, galvanized, Standard profile, color: silver, Pack of 25 (50 m)

## PT 2,5-PE/L/L/MT - Knife-disconnect terminal block

1336388

<https://www.phoenixcontact.com/us/products/1336388>



### NS 35/ 7,5 ZN UNPERF 2000MM - DIN rail, unperforated

1206434

<https://www.phoenixcontact.com/us/products/1206434>



DIN rail, unperforated, acc. to EN 60715, material: Steel, galvanized, Standard profile, color: silver, Pack of 25 (50 m)

---

### NS 35/ 7,5 CU UNPERF 2000MM-VPE 10 - DIN rail, unperforated

0801762

<https://www.phoenixcontact.com/us/products/0801762>



DIN rail, unperforated, acc. to EN 60715, material: Copper, uncoated, Standard profile, color: copper-colored, Pack of 10 (20 m)



## PT 2,5-PE/L/L/MT - Knife-disconnect terminal block

1336388

<https://www.phoenixcontact.com/us/products/1336388>



## NS 35/ 7,5 CAP - End cap

1206560

<https://www.phoenixcontact.com/us/products/1206560>

DIN rail end piece, for DIN rail NS 35/7.5



---

## NS 35/15 PERF 2000MM - DIN rail perforated

1201730

<https://www.phoenixcontact.com/us/products/1201730>



DIN rail perforated, similar to EN 60715, material: Steel, galvanized, passivated with a thick layer, Standard profile, color: silver, Pack of 25 (50 m)

## PT 2,5-PE/L/L/MT - Knife-disconnect terminal block

1336388

<https://www.phoenixcontact.com/us/products/1336388>



### NS 35/15 UNPERF 2000MM - DIN rail, unperforated

1201714

<https://www.phoenixcontact.com/us/products/1201714>



DIN rail, unperforated, similar to EN 60715, material: Steel, galvanized, passivated with a thick layer, Standard profile, color: silver, Pack of 25 (50 m)

---

### NS 35/15 WH PERF 2000MM - DIN rail perforated

0806602

<https://www.phoenixcontact.com/us/products/0806602>



DIN rail perforated, similar to EN 60715, material: Steel, Galvanized, white passivated, Standard profile, color: white, Pack of 25 (50 m)

## PT 2,5-PE/L/L/MT - Knife-disconnect terminal block

1336388

<https://www.phoenixcontact.com/us/products/1336388>



### NS 35/15 WH UNPERF 2000MM-VPE 10 - DIN rail, unperforated

1204135

<https://www.phoenixcontact.com/us/products/1204135>



DIN rail, unperforated, similar to EN 60715, material: Steel, Galvanized, white passivated, Standard profile, color: silver, Pack of 10 (20 m)

---

### NS 35/15 AL UNPERF 2000MM - DIN rail, unperforated

1201756

<https://www.phoenixcontact.com/us/products/1201756>



DIN rail, unperforated, similar to EN 60715, material: Aluminum, uncoated, Standard profile, color: silver

# PT 2,5-PE/L/L/MT - Knife-disconnect terminal block



1336388

<https://www.phoenixcontact.com/us/products/1336388>

## NS 35/15 ZN PERF 2000MM - DIN rail perforated

1206599

<https://www.phoenixcontact.com/us/products/1206599>



DIN rail perforated, similar to EN 60715, material: Steel, galvanized, Standard profile, color: silver, Pack of 25 (50 m)

---

## NS 35/15 ZN UNPERF 2000MM - DIN rail, unperforated

1206586

<https://www.phoenixcontact.com/us/products/1206586>



DIN rail, unperforated, similar to EN 60715, material: Steel, galvanized, Standard profile, color: silver, Pack of 25 (50 m)

# PT 2,5-PE/L/L/MT - Knife-disconnect terminal block

1336388

<https://www.phoenixcontact.com/us/products/1336388>



## NS 35/15 CU UNPERF 2000MM-VPE 10 - DIN rail, unperforated

1201895

<https://www.phoenixcontact.com/us/products/1201895>



DIN rail, unperforated, similar to EN 60715, material: Copper, uncoated, Standard profile, color: copper-colored, Pack of 10 (20 m)

---

## NS 35/15 CAP - End cap

1206573

<https://www.phoenixcontact.com/us/products/1206573>

DIN rail end piece, for DIN rail NS 35/15



## PT 2,5-PE/L/L/MT - Knife-disconnect terminal block

1336388

<https://www.phoenixcontact.com/us/products/1336388>



## NS 35/15-2,3 UNPERF 2000MM-VPE 10 - DIN rail, unperforated

1201798

<https://www.phoenixcontact.com/us/products/1201798>



DIN rail, unperforated, acc. to EN 60715, material: Steel, galvanized, passivated with a thick layer, Standard profile 2.3 mm, color: silver, Pack of 10 (20 m)

---

## ZBF 5:UNBEDRUCKT - Zack Marker strip, flat

0808642

<https://www.phoenixcontact.com/us/products/0808642>



Zack Marker strip, flat, Strip, white, unlabeled, can be labeled with: PLOTMARK, CMS-P1-PLOTTER, mounting type: snapped, for terminal block width: 5 mm, lettering field size: 5.1 x 5.2 mm, Number of individual labels: 10

# PT 2,5-PE/L/L/MT - Knife-disconnect terminal block



1336388

<https://www.phoenixcontact.com/us/products/1336388>

## ZBF 5 CUS - Zack Marker strip, flat

0825025

<https://www.phoenixcontact.com/us/products/0825025>



Zack Marker strip, flat, can be ordered: Strip, white, labeled according to customer specifications, mounting type: snap into flat marker groove, for terminal block width: 5 mm, lettering field size: 5.15 x 5.15 mm, Number of individual labels: 10

---

## ZBF 5,LGS:FORTL.ZAHLEN - Zack Marker strip, flat

0808671

<https://www.phoenixcontact.com/us/products/0808671>



Zack Marker strip, flat, Strip, white, labeled, printed horizontally: consecutive numbers 1 ... 10, 11 ... 20, etc. up to 491 ... 500, mounting type: snapped, for terminal block width: 5 mm, lettering field size: 5.15 x 5.15 mm, Number of individual labels: 10

# PT 2,5-PE/L/L/MT - Knife-disconnect terminal block



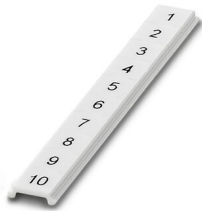
1336388

<https://www.phoenixcontact.com/us/products/1336388>

## ZBF 5,QR:FORTL.ZAHLEN - Zack Marker strip, flat

0808697

<https://www.phoenixcontact.com/us/products/0808697>



Zack Marker strip, flat, Strip, white, labeled, Printed vertically: consecutive numbers 1 ... 10, 11 ... 20, etc. up to 91 ... 100, mounting type: snapped, for terminal block width: 5 mm, lettering field size: 5.15 x 5.15 mm, Number of individual labels: 10

---

## ZBF 5,LGS:GERADE ZAHLEN - Zack Marker strip, flat

0810821

<https://www.phoenixcontact.com/us/products/0810821>



Zack Marker strip, flat, Strip, white, labeled, printed horizontally: consecutive even numbers 2 ... 20, 22 ... 40, etc. up to 82 ... 100, mounting type: snapped, for terminal block width: 5 mm, lettering field size: 5.15 x 5.15 mm, Number of individual labels: 10



# PT 2,5-PE/L/L/MT - Knife-disconnect terminal block



1336388

<https://www.phoenixcontact.com/us/products/1336388>

## ZBF 5,LGS:UNGERADE ZAHLEN - Zack Marker strip, flat

0810863

<https://www.phoenixcontact.com/us/products/0810863>



Zack Marker strip, flat, Strip, white, labeled, printed horizontally: Odd numbers 1 - 19, 21 - 39, etc. up to 81 - 99, mounting type: snapped, for terminal block width: 5 mm, lettering field size: 5.15 x 5.15 mm, Number of individual labels: 10

---

## UC-TMF 5 - Marker for terminal blocks

0818153

<https://www.phoenixcontact.com/us/products/0818153>



Marker for terminal blocks, Sheet, white, unlabeled, can be labeled with: BLUEMARK ID COLOR, BLUEMARK ID, BLUEMARK CLED, PLOTMARK, CMS-P1-PLOTTER, mounting type: snapped, for terminal block width: 5.2 mm, lettering field size: 4.6 x 5.1 mm, Number of individual labels: 96

# PT 2,5-PE/L/L/MT - Knife-disconnect terminal block



1336388

<https://www.phoenixcontact.com/us/products/1336388>

## UC-TMF 5 CUS - Marker for terminal blocks

0824638

<https://www.phoenixcontact.com/us/products/0824638>



Marker for terminal blocks, can be ordered: by sheet, white, labeled according to customer specifications, mounting type: snap into flat marker groove, for terminal block width: 5.2 mm, lettering field size: 4.6 x 5.1 mm, Number of individual labels: 96

---

## UCT-TMF 5 - Marker for terminal blocks

0828744

<https://www.phoenixcontact.com/us/products/0828744>



Marker for terminal blocks, Sheet, white, unlabeled, can be labeled with: TOPMARK NEO, TOPMARK LASER, BLUEMARK ID COLOR, BLUEMARK ID, BLUEMARK CLED, THERMOMARK PRIME, THERMOMARK CARD 2.0, THERMOMARK CARD, mounting type: snapped, for terminal block width: 5.2 mm, lettering field size: 4.4 x 4.7 mm, Number of individual labels: 72

## PT 2,5-PE/L/L/MT - Knife-disconnect terminal block

1336388

<https://www.phoenixcontact.com/us/products/1336388>



## UCT-TMF 5 CUS - Marker for terminal blocks

0829658

<https://www.phoenixcontact.com/us/products/0829658>



Marker for terminal blocks, can be ordered: by sheet, white, labeled according to customer specifications, mounting type: snap into flat marker groove, for terminal block width: 5.2 mm, lettering field size: 4.4 x 4.7 mm, Number of individual labels: 72

---

## ISH 2,5/0,2 - Insulating sleeve

3002843

<https://www.phoenixcontact.com/us/products/3002843>



Insulating sleeve, color: white

# PT 2,5-PE/L/L/MT - Knife-disconnect terminal block



1336388

<https://www.phoenixcontact.com/us/products/1336388>

## ISH 2,5/0,5 - Insulating sleeve

3002856

<https://www.phoenixcontact.com/us/products/3002856>



Insulating sleeve, color: gray

---

## ISH 2,5/1,0 - Insulating sleeve

3002869

<https://www.phoenixcontact.com/us/products/3002869>



Insulating sleeve, color: black

# PT 2,5-PE/L/L/MT - Knife-disconnect terminal block



1336388

<https://www.phoenixcontact.com/us/products/1336388>

## PAI-4-FIX-5/6 BU - Test adapter

3035975

<https://www.phoenixcontact.com/us/products/3035975>



4 mm test adapter, for terminal blocks with 5.2 mm and 6.2 mm pitch

---

## PAI-4-FIX-5/6 OG - Test adapter

3035974

<https://www.phoenixcontact.com/us/products/3035974>



4 mm test adapter, for terminal blocks with 5.2 mm and 6.2 mm pitch

# PT 2,5-PE/L/L/MT - Knife-disconnect terminal block



1336388

<https://www.phoenixcontact.com/us/products/1336388>

## PAI-4-FIX-5/6 YE - Test adapter

3035977

<https://www.phoenixcontact.com/us/products/3035977>



4 mm test adapter, for terminal blocks with 5.2 mm and 6.2 mm pitch

---

## PAI-4-FIX-5/6 RD - Test adapter

3035976

<https://www.phoenixcontact.com/us/products/3035976>



4 mm test adapter, for terminal blocks with 5.2 mm and 6.2 mm pitch

# PT 2,5-PE/L/L/MT - Knife-disconnect terminal block



1336388

<https://www.phoenixcontact.com/us/products/1336388>

## PAI-4-FIX-5/6 GN - Test adapter

3035978

<https://www.phoenixcontact.com/us/products/3035978>



4 mm test adapter, for terminal blocks with 5.2 mm and 6.2 mm pitch

---

## PAI-4-FIX-5/6 BK - Test adapter

3035980

<https://www.phoenixcontact.com/us/products/3035980>



4 mm test adapter, for terminal blocks with 5.2 mm and 6.2 mm pitch

# PT 2,5-PE/L/L/MT - Knife-disconnect terminal block



1336388

<https://www.phoenixcontact.com/us/products/1336388>

## PAI-4-FIX-5/6 GY - Test adapter

3035982

<https://www.phoenixcontact.com/us/products/3035982>



4 mm test adapter, for terminal blocks with 5.2 mm and 6.2 mm pitch

---

## PAI-4-FIX-5/6 VT - Test adapter

3035979

<https://www.phoenixcontact.com/us/products/3035979>



4 mm test adapter, for terminal blocks with 5.2 mm and 6.2 mm pitch



## PT 2,5-PE/L/L/MT - Knife-disconnect terminal block

1336388

<https://www.phoenixcontact.com/us/products/1336388>



### PAI-4-FIX-5/6 BN - Test adapter

3035981

<https://www.phoenixcontact.com/us/products/3035981>



4 mm test adapter, for terminal blocks with 5.2 mm and 6.2 mm pitch

---

### PAI-4-FIX-5/6 WH - Test adapter

3035983

<https://www.phoenixcontact.com/us/products/3035983>



4 mm test adapter, for terminal blocks with 5.2 mm and 6.2 mm pitch

# PT 2,5-PE/L/L/MT - Knife-disconnect terminal block



1336388

<https://www.phoenixcontact.com/us/products/1336388>

## PS-5 - Test plugs

3030983

<https://www.phoenixcontact.com/us/products/3030983>



Test plugs, Modular test plug, number of positions: 1, color: red

---

## DP PS-5 - Spacer plate

3036725

<https://www.phoenixcontact.com/us/products/3036725>



Spacer plate, length: 22.4 mm, width: 5.2 mm, height: 22.4 mm, number of positions: 1, color: red

## PT 2,5-PE/L/L/MT - Knife-disconnect terminal block

1336388

<https://www.phoenixcontact.com/us/products/1336388>



## PS-5/2,3MM RD - Test plugs

3038723

<https://www.phoenixcontact.com/us/products/3038723>



Test plugs, number of positions: 1, color: red

---

## PROJECT COMPLETE - Software

1050453

<https://www.phoenixcontact.com/us/products/1050453>



Intuitive planning and marking software for configuring terminal strips and for professional marking of marking materials for terminal blocks, conductors, cables, devices, and systems. The software is available for download

# PT 2,5-PE/L/L/MT - Knife-disconnect terminal block



1336388

<https://www.phoenixcontact.com/us/products/1336388>

## CLIPFIX 35 - End clamp

3022218

<https://www.phoenixcontact.com/us/products/3022218>



Quick mounting end clamp for NS 35/7,5 DIN rail or NS 35/15 DIN rail, with marking option, width: 9.5 mm, color: gray

---

## CLIPFIX 35-5 - End clamp

3022276

<https://www.phoenixcontact.com/us/products/3022276>



Quick mounting end clamp for NS 35/7,5 DIN rail or NS 35/15 DIN rail, with marking option, with parking option for FBS...5, FBS...6, KSS 5, KSS 6, width: 5.15 mm, color: gray

## PT 2,5-PE/L/L/MT - Knife-disconnect terminal block

1336388

<https://www.phoenixcontact.com/us/products/1336388>

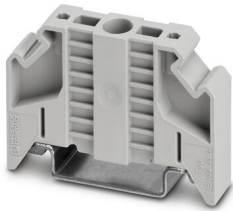


### E/NS 35 N - End clamp

0800886

<https://www.phoenixcontact.com/us/products/0800886>

End clamp, width: 9.5 mm, color: gray



---

### CRIMPFOX CENTRUS 6S - Crimping pliers

1213144

<https://www.phoenixcontact.com/us/products/1213144>



Crimping pliers, for uninsulated and insulated ferrules, DIN 46228 Part 1 and 4, from 0.14 mm<sup>2</sup> ... 6 mm<sup>2</sup>, also for TWIN ferrules up to 2 x 4 mm<sup>2</sup>, automatic cross section adjustment, lateral insertion, equipped with fall protection

## PT 2,5-PE/L/L/MT - Knife-disconnect terminal block



1336388

<https://www.phoenixcontact.com/us/products/1336388>

### CRIMPFOX CENTRUS 10S - Crimping pliers

1213154

<https://www.phoenixcontact.com/us/products/1213154>



Crimping pliers, for uninsulated and insulated ferrules, DIN 46228 Part 1 and 4, from 0.14 mm<sup>2</sup> ... 10 mm<sup>2</sup>, also for TWIN ferrules up to 2 x 4 mm<sup>2</sup>, automatic cross section adjustment, lateral insertion, equipped with fall protection

---

### CRIMPFOX CENTRUS 6H - Crimping pliers

1213146

<https://www.phoenixcontact.com/us/products/1213146>



Crimping pliers, for uninsulated and insulated ferrules, DIN 46228 Part 1 and 4, from 0.14 mm<sup>2</sup> ... 6 mm<sup>2</sup>, also for TWIN ferrules up to 2 x 4 mm<sup>2</sup>, automatic cross section adjustment, lateral insertion, equipped with fall protection

## PT 2,5-PE/L/L/MT - Knife-disconnect terminal block



1336388

<https://www.phoenixcontact.com/us/products/1336388>

### CRIMPFOX CENTRUS 10H - Crimping pliers

1213156

<https://www.phoenixcontact.com/us/products/1213156>



Crimping pliers, for uninsulated and insulated ferrules, DIN 46228 Part 1 and 4, from 0.14 mm<sup>2</sup> ... 10 mm<sup>2</sup>, also for TWIN ferrules up to 2 x 4 mm<sup>2</sup>, automatic cross section adjustment, lateral insertion, equipped with fall protection

---

### CRIMPFOX 10S - Crimping pliers

1212045

<https://www.phoenixcontact.com/us/products/1212045>



Crimping pliers, for ferrules without insulating collar according to DIN 46228 Part 1 and ferrules with insulating collar according to DIN 46228 Part 4, 0.14 mm<sup>2</sup> ... 10 mm<sup>2</sup>, unlockable pressure lock, lateral entry

## PT 2,5-PE/L/L/MT - Knife-disconnect terminal block



1336388

<https://www.phoenixcontact.com/us/products/1336388>

### CRIMPFOX 6H - Crimping pliers

1212046

<https://www.phoenixcontact.com/us/products/1212046>



Crimping pliers, for ferrules without insulating collar according to DIN 46228 Part 1 and ferrules with insulating collar according to DIN 46228 Part 4, 0.14 mm<sup>2</sup> ... 6 mm<sup>2</sup>, unlockable pressure lock, lateral entry

---

### CRIMPFOX 2,5-M - Crimping pliers

1212719

<https://www.phoenixcontact.com/us/products/1212719>



Crimping pliers, for ferrules without insulating collar according to DIN 46228 Part 1 and ferrules with insulating collar according to DIN 46228 Part 4, 0.25 mm<sup>2</sup> ... 2.5 mm<sup>2</sup>, lateral entry, trapezoidal crimp



# PT 2,5-PE/L/L/MT - Knife-disconnect terminal block



1336388

<https://www.phoenixcontact.com/us/products/1336388>

## CRIMPFOX 6-M - Crimping pliers

1212720

<https://www.phoenixcontact.com/us/products/1212720>



Crimping pliers, for ferrules without insulating collar according to DIN 46228 Part 1 and ferrules with insulating collar according to DIN 46228 Part 4, 0.25 mm<sup>2</sup> ... 6.0 mm<sup>2</sup>, lateral entry, trapezoidal crimp

---

## CRIMPFOX 6 - Crimping pliers

1212034

<https://www.phoenixcontact.com/us/products/1212034>



Crimping pliers, for ferrules without insulating collar according to DIN 46228 Part 1 and ferrules with insulating collar according to DIN 46228 Part 4, 0.25 mm<sup>2</sup> ... 6.0 mm<sup>2</sup>, lateral entry, trapezoidal crimp

# PT 2,5-PE/L/L/MT - Knife-disconnect terminal block



1336388

<https://www.phoenixcontact.com/us/products/1336388>

## CRIMPFOX 6T - Crimping pliers

1212037

<https://www.phoenixcontact.com/us/products/1212037>



Crimping pliers, for ferrules without insulating collar according to DIN 46228 Part 1 and ferrules with insulating collar according to DIN 46228 Part 4, 0.25 mm<sup>2</sup> ... 6 mm<sup>2</sup>, lateral entry, trapezoidal crimp

---

## CRIMPFOX 6T-F - Crimping pliers

1212038

<https://www.phoenixcontact.com/us/products/1212038>



Crimping pliers, for ferrules without insulating collar according to DIN 46228 Part 1 and ferrules with insulating collar according to DIN 46228 Part 4, 0.25 mm<sup>2</sup> ... 6 mm<sup>2</sup>, front entry, trapezoidal crimp

# PT 2,5-PE/L/L/MT - Knife-disconnect terminal block



1336388

<https://www.phoenixcontact.com/us/products/1336388>

## CRIMPFOX 6S-F - Crimping pliers

1212043

<https://www.phoenixcontact.com/us/products/1212043>



Crimping pliers, for ferrules without insulating collar according to DIN 46228 Part 1 and ferrules with insulating collar according to DIN 46228 Part 4, 0.5 mm<sup>2</sup> ... 6 mm<sup>2</sup>, front entry, square crimp

---

## CRIMPFOX-M - Crimping pliers

1212072

<https://www.phoenixcontact.com/us/products/1212072>



Basic pliers, for accommodating dies for a wide range of type of contacts

---

Phoenix Contact 2023 © - all rights reserved  
<https://www.phoenixcontact.com>

Phoenix Contact USA  
586 Fulling Mill Road  
Middletown, PA 17057, United States  
(+717) 944-1300  
[info@phoenixcon.com](mailto:info@phoenixcon.com)